

## FIRST YACHT 53

### 17 metres of sheer sensation

LE GRAND LARGE, GIVRAND, MAY 2019



Benefiting from the “First” legacy of 40 years at sea, the eagerly awaited First Yacht 53 will make her preliminary series of tacks early this autumn. The First Yacht 53 is a high-end sailing yacht marrying luxury and performance, making her comfortable and easy to move around. Two stars aligned for her creation: Roberto Biscontini of America’s Cup fame for the hull design and Lorenzo Argento for the interior and exterior design. Designed for sailing purists, with high expectations of excitement at the helm and life at sea, the First Yacht 53 boasts strong features making her above all...very much a First!

#### A HULL AND SAIL PLAN QUICK TO CLOCK UP MILES

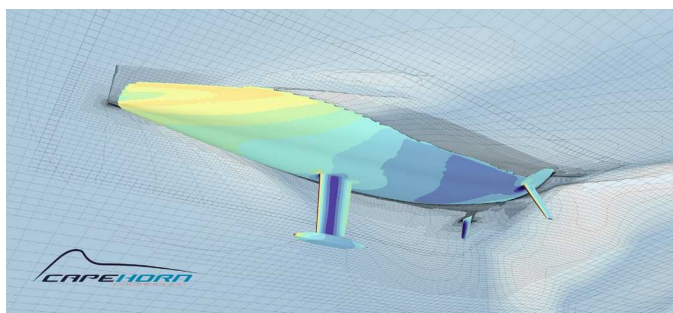
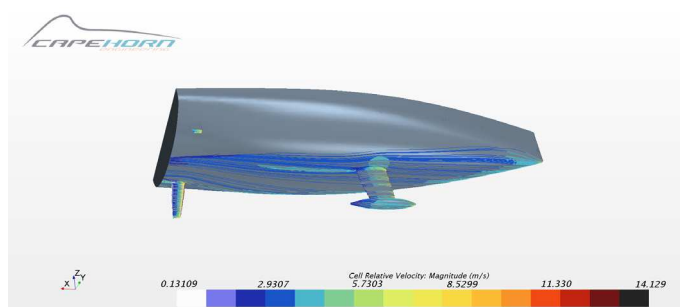
Featuring a full plumb bow and a maximum beam further aft, the twin rudders give the perfect feed-back to control this highly responsive hull. The 2.5 m or 3 m draught (with lead bulb), as well as an optional carbon mast, gives the First Yacht 53 the competitive advantage to clock up miles quickly. *“I have always looked for performance on the boats that I sail*

#### PRESS CONTACT

Julien FERRE  
Tel +33 (0) 6 74 22 77 16  
[j.ferre@beneteau.fr](mailto:j.ferre@beneteau.fr)

[WWW.BENETEAU.COM](http://WWW.BENETEAU.COM)

and build. *The First Yacht 53 is a lot like me!*” said Robert Biscontini in good humor, in light of his incredible experience in the America’s Cup. To achieve maximum thrills at the helm, we focused on balancing weight and balance under sail when we designed the boat. We worked hard to optimize the position of the centre of buoyancy in relation to the centre of effort, guaranteeing a lively yacht under sail, responding quickly to the helm. We asked the best outfitters to provide their top performing products: North Sails for the sails, Harken for the deck gear, Lorima for the mast, and Lemer for the keel. They were all involved on the recent design of the Figaro BENETEAU 3 with foils.



## A SAFE EASY-FLOW DECK PLAN

Deck circulation, from the helm station to the foredeck, has been improved considerably on the First Yacht 53, by Lorenzo Argento, one of the founders of “Modern Yachting”. The Italian designer has succeeded in taking ease of movement one step further! *“There is no need to step over anything or to obstruct a crew member. Everything flows, with the cockpit divided into two distinct sections: the helm and maneuver, and a relaxation area. There is just one watchword for this First Yacht 53:*



“intuitive”, stresses Lorenzo Argento, who is a sailor himself. Winchs nearby the steering stations can be easily be operated by crew members wishing to get involved in trimming the sails. Movement is wonderfully safe on this flush deck fitted with handrails and coamings. All these details make the First Yacht 53 a seaworthy boat at ease on the high seas and comfortable on a mooring. What is more, once the anchor is cast, two people can easily take out the 2.4 m (8') tender stored longitudinally in a tender garage.

## BUILD OFFERING MAXIMUM RIGIDITY

The hull is built using the infusion process for optimal control of the boat's weight and for its excellent mechanical properties. The hull structural inner hull liner is infused, then bonded and laminated in areas subject to high stress, such as the chainplates and the keel. In addition to this technique, which mastered by BENETEAU for many years, it makes use of a concept that is mainly used on super yachts up until now, and this is an aluminium sole to which interior fittings are fixed. The overall structure, and the lowering and centering of weight have been considerably optimized to improve stiffness and performance.

## INTERIOR LAYOUT AND DESIGN MATCH THE EXPECTATIONS OF LUXURY YACHT OWNERS

*“On a beautiful yacht such as this, few owners dine inside. Many of them prefer to lunch outside in the cockpit instead of sitting around a large saloon table indoors. We have changed the layout to meet their expectations, giving it a smaller table and relaxation area with a large sofa and an coffee table. I really love this sofa as I spent a lot of time working on it!”* says Lorenzo Argento. We have completely revisited the layout of the saloon to provide a like-at-home atmosphere with two spaces: a galley and dining table to port, with a relaxation area and sofa to starboard. The modern interior décor is timeless and chic with white lacquered bulkheads together with moulded woodwork and teak floors, yet remains practical





at sea with numerous fiddles and handrails. The interior of the First Yacht 53 comes with three cabins and two heads, including a forward owner cabin. The other option is a layout with three cabins and three heads and a skipper's cabin are also on offer. She is bright and well ventilated, with a gently sloping companionway for good communication between the interior and exterior spaces and her service area is easy to access. In all, she is an ocean-going combination of good looks and practicality!



After two years of development, the First Yacht 53 will be shown for the first time at the autumn boat shows in Europe (Cannes, Genoa, Barcelona) and America (Annapolis). This new high-end First meets the expectations of the most demanding sailors. The BENETEAU boatyard's and architects' keyword has been high performance. The yacht aims for excellence in fast comfortable sailing. And if you love to race, why not sign up for a couple of regattas? She's performance ready.

## PROVISIONAL GENERAL SPECIFICATIONS

LOA	17,16 m	56'4"
Hull length	15,98 m	52'5"
LWL	15,40 m	50'6"
Beam	5,00 m	16'5"
Standard draft (T-keel)	2,50 m	8'2"
Standard ballast weight (cast iron)	4 500 kg	9,918 lbs
Performance draft (T-keel)	3,00 m	9'10"
Performance ballast weight (cast iron/ lead)	4 500 kg	9,918 lbs
Air draft (excluding aerals)	25,80 m	85'
Air draft - Performance (excluding aerals)	26,80 m	88'
Light displacement	15 500 kg	34,162 lbs
Fuel capacity (standard)	400 L	106 US Gal
Fresh water capacity (standard)	720 L	190 US Gal
Engine power Sail drive (standard)	80 CV	80 HP
Engine power shaft drive (option)	110 CV	110 HP

### ALUMINIUM MAST

Mainsail	87 m <sup>2</sup>	936 sq/ft
Furling genoa (105 %)	78,90 m <sup>2</sup>	849 sq/ft
Code 0	179 m <sup>2</sup>	1,926 sq/ft
Asymmetrical spinnaker	254 m <sup>2</sup>	2,730 sq/ft

### CARBON MAST (+ 1 m / 3'3")

Performance version mainsail	91 m <sup>2</sup>	979 sq/ft
Furling genoa (105 %)	82 m <sup>2</sup>	882 sq/ft
Code 0	185 m <sup>2</sup>	1,990 sq/ft
Asymmetrical spinnaker	265 m <sup>2</sup>	2,850 sq/ft

## ARCHITECT / DESIGNER

Naval Architect: BISCONTINI YACHT DESIGN  
Deck & Interior Design: LORENZO ARGENTO

## EC CERTIFICATE

A10/B12/C14

# FIRST Yacht



**BENETEAU**  
AVANT-GARDE IN BOATING



Side view

---



Main deck

---



Lower deck - 3 cabins / 2 heads

---



Lower deck - 3 cabins / 3 heads

---